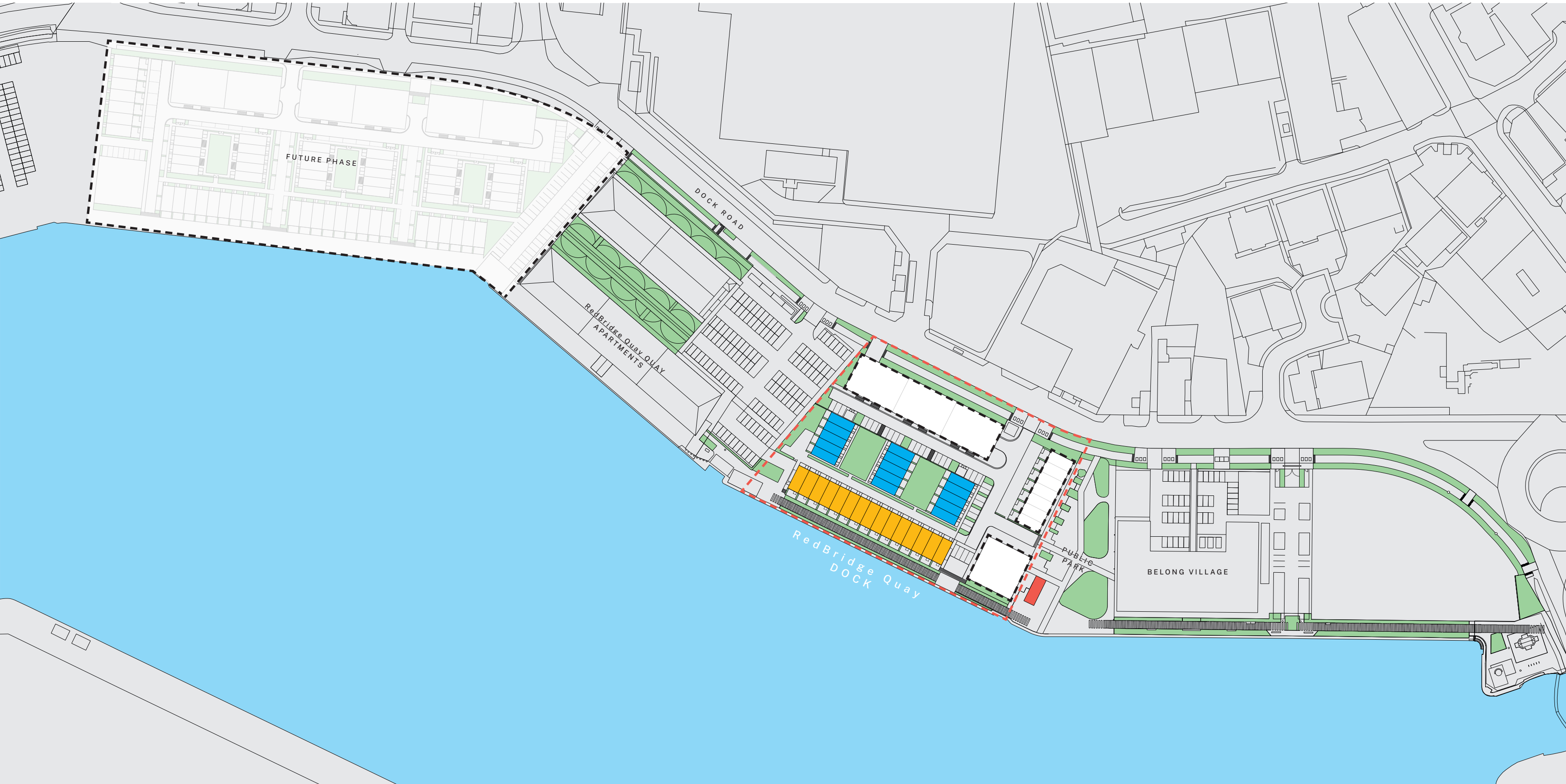




# RedBridge Quay Area Plan






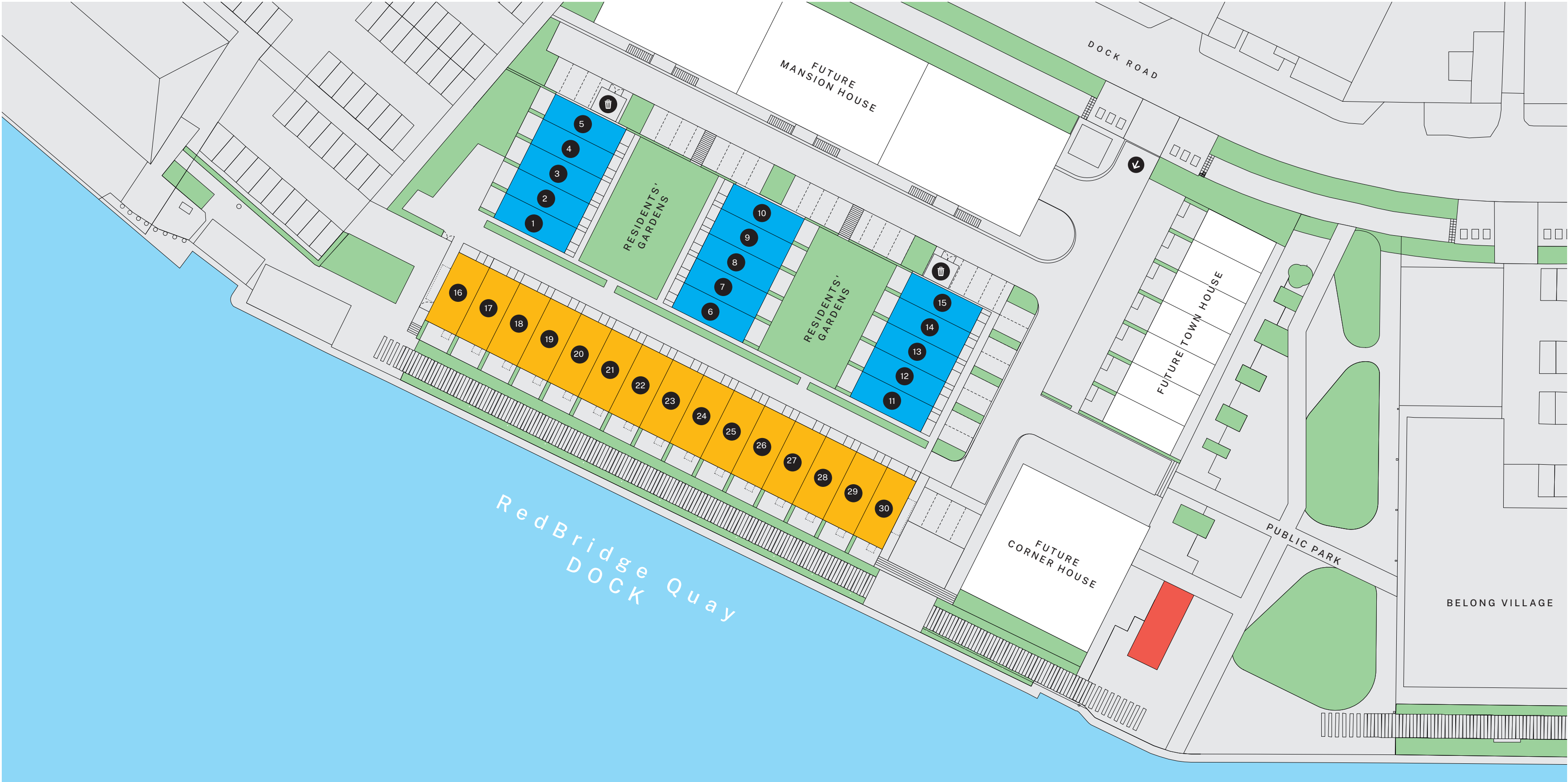
-  Future phases
-  Homes for sale
-  Town House
-  Row House
-  Sales Centre



# Wirral Waters RedBridge Quay



- Town House
- Row House
- Sales Centre
-  Entrance
-  Bin storage
-  Boardwalk

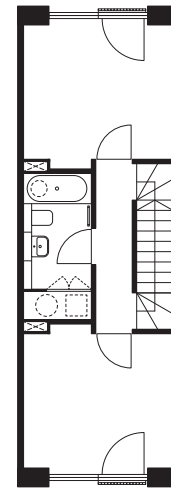


# Row House Two-storey

Plots 5,9,10,13,15

Upper  
Floor

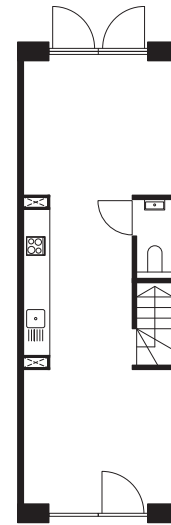
M1



79 sq m  
2 rooms  
1 bathroom

Ground Floor

G1



# Row House Two-and-a-half-storey

Plots 1,11

Upper Floor

U3



104 sq m  
3 rooms  
2 bathrooms  
Terrace

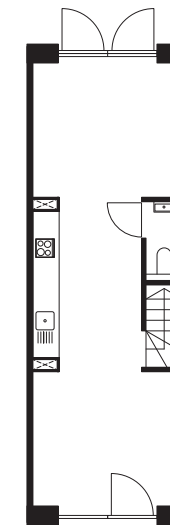
Middle Floor

M1



Ground Floor

G1



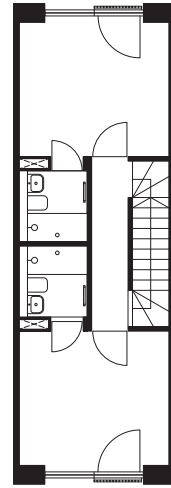
# Row House Three-storey

Layout 1 —  
Plots 2,4,6,8,12

116 sq m  
4 rooms  
3 bathrooms

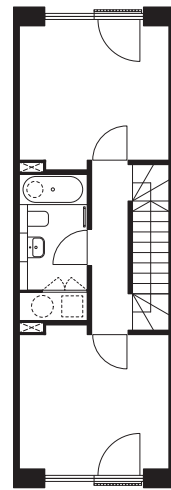
Upper Floor

U6



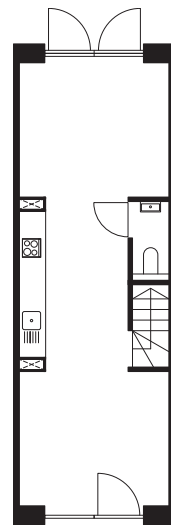
Middle Floor

M1



Ground Floor

G1



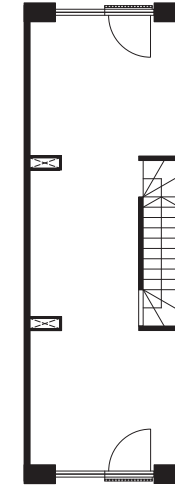
# Row House Three-storey

Layout 2 —  
Plots 3,7,14

116 sq m  
3 rooms inc master suite  
1 bathroom

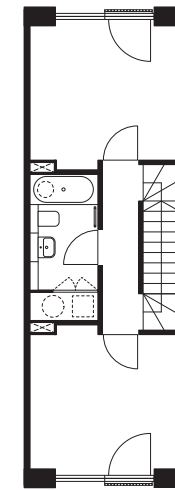
Upper Floor

U4



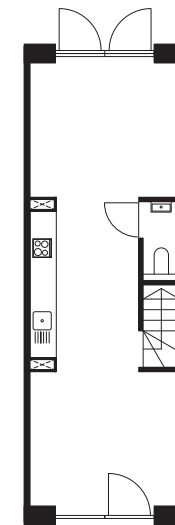
Middle Floor

M1



Ground  
Floor

G1



# Row House Specification

Why should you ever have to pay for upgrades when you buy a new home?

All House by Urban Splash homes come with high specification sanitaryware and appliances as standard, it's just what we do. Our belief in delivering the highest possible quality homes covers every aspect of the build, right down to taps, tiles and toilets.

## Bathroom

- White ceramic Vitra sanitaryware
- Vado shower (over-bath)
- Chrome taps and fittings
- Heated towel rail
- Mirror and storage cupboards
- Ceramic floor tiles  
Waxman Vienna tiles, 300x600mm
- Full height ceramic tiles to the bath/shower  
Waxman Vienna tiles, 300x600mm and ceramic Waxman mosaic tiles 50x50mm

## Kitchen

- Fully integrated units
- Induction hob and slimline extractor
- Integrated fridge and freezer
- Integrated oven
- Integrated dishwasher
- Worktop 20mm composite stone (Silestone, Quartz stone or similar)
- Glass splash back
- Chrome monobloc kitchen tap with stainless steel sink

## Windows and external doors

- Kawneer AA720 thermally broken aluminium windows and doors

## Lighting

- LED/low energy lighting throughout

## Heating and hot water

- Electric panel heating
- Air source water cylinder 270L capacity
- Heating is wifi operable and air source
- Water cylinder is operated locally

## Wall finishes

- Painted MDF panelling to internal partitions
- Painted dry lining to ceiling

## Media

- Broadband connection facilities and satellite points

## Other

- Dedicated space for washing machine with plumbing

## External walls

- US modular insulated warm roof construction finished with single ply membrane (estimated U value of 0.1)

## External

- Parking and garden (plot specific)

## Roof

- US modular insulated timber frame finished with single ply membrane (estimated U Value 0.1)

## Warranty

- Checkmate 10 year new home warranty

